



MAIL PROCESSING AND WORKSHARE

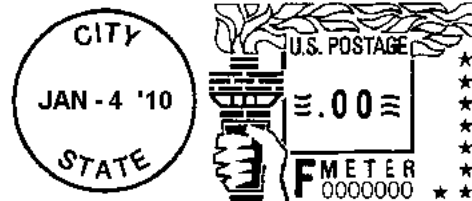
Jeffery Oliver, *BME Supervisor*
January 19, 2023

OVERVIEW

This presentation will give the mailer a general overview of mail processing and sortation which relates to workshare and equates to a reduction in postage.

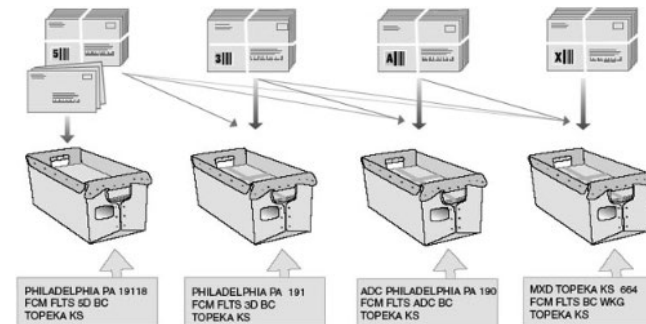
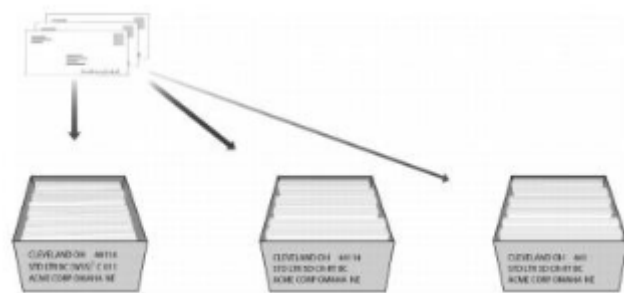
Permit Mail Privilege

- With a paid Mail permit postage is precanceled by utilizing a Permit Imprint Indica, Precanceled stamps, or Metering. This allows the USPS bypass the use of this machine entirely.



Presort & Entry

- 3D/5D zip presort
- Automation/Non-Automation
- AADC/ADC – Automated Area Distribution Center
- NDC - Network Distribution Center
- DSCF – Destination Sectional Center Facility
- DDU – Destination Delivery Unit



Levels of Destination Entry



DNDC

Destination Network Distribution Center

There are 21 DNDCs in the U.S. For this discount, you may choose to enter your mail at a destination network distribution center. The 21 network distribution centers in the United States handle mail for large areas. An auxiliary service facility (ASF) sometimes acts as a DNDC. To qualify for DNDC prices, your mailpieces must be addressed for delivery within the service area for that particular DNDC or ASF.

Available for:

- Standard Mail
- Periodicals
- Bound Printed Matter
- Parcel Select



DSCF

Destination Sectional Center Facility

There are 350 DSCFs in the U.S. You can receive a greater discount by entering your mail at a destination sectional center facility. To qualify for DSCF prices, your mailpieces must be addressed for delivery within the service area for that particular DSCF.

Available for:

- Standard Mail
- Periodicals
- Bound Printed Matter
- Parcel Select



DDU

Destination Delivery Unit (local Post Office)

There are more than 33,000 DDUs in the U.S. You can receive an even greater discount by taking your mail to a destination delivery unit. Eligible pieces must be addressed for delivery within the service area for that particular DDU.

Available for:

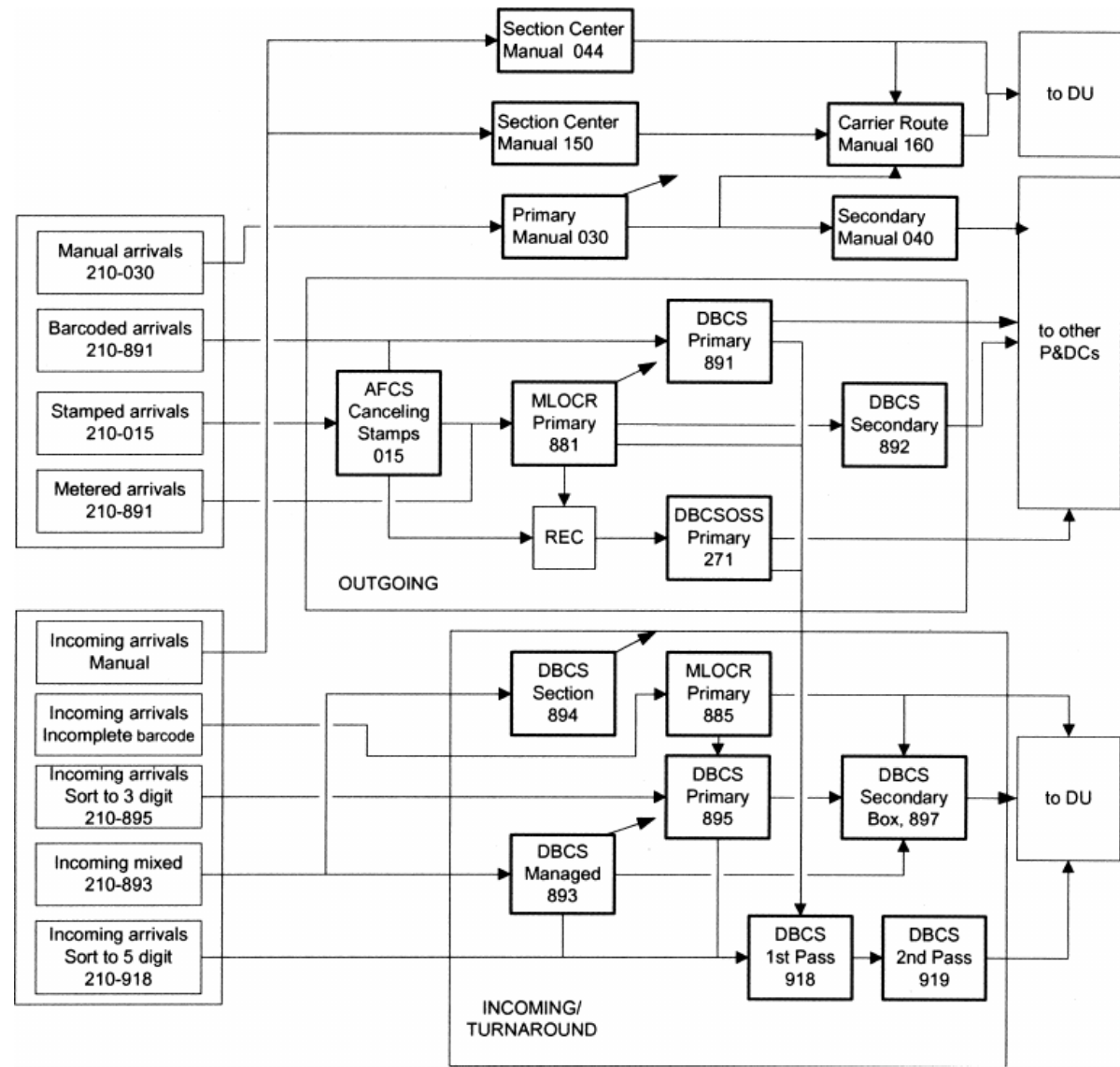
- Standard Mail (Parcels and Carrier Route only)
- Periodicals (Carrier Route only)
- Bound Printed Matter
- Parcel Select

USPS Marketing Mail

Commercial Letters

Entry Discount	Automation ^{1,4}			Mixed AADC
	5-Digit	AADC		
None	\$0.305	\$0.339		\$0.360
DNDC	0.282	0.316		0.337
DSCF	0.275	0.309		-
DDU	-	-		-

Entry Discount	Nonmachinable			
	5-Digit	3-Digit	ADC	Mixed ADC
None	\$0.653	\$0.778	\$0.842	\$0.923
DNDC	0.584	0.709	0.773	0.854
DSCF	0.564	0.689	0.753	-
DDU	-	-	-	-



Mail Process

- Presort mail
- Machinable vs Nonmachinable
- Automation or Non-Automation
- Mail is diverted to appropriate machine

Processing Machines

- LCTS – Low Cost Tray Sorter



Processing Machines

- DBCS – Delivery Bar Code Sorter



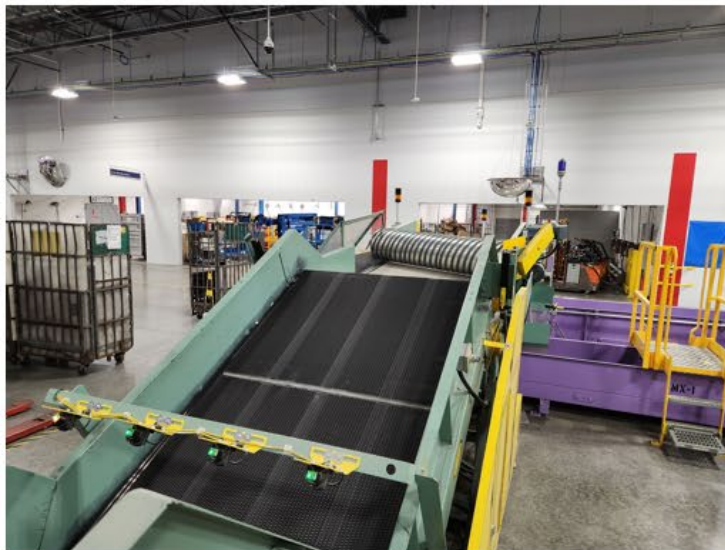
Processing Machines

- DIOSS – Delivery Bar Code Sorter with Optical Character Reader, Input/Output Subsystem



Processing Machines

- AFCS - Advanced Facer Canceler System



Processing Machines

- AFSM – Automated Flat Sorting Machine



Summary

- The USPS uses workshare discounts to increase its operational efficiencies.
- Discounts offered to mailers for mail preparation and distribution activities otherwise performed by USPS
- Discounts include presorting, pre-barcoding and transporting mail